



## THE BUYING & BUILD PROCESS

**CUSTOM BUILT TRAILERS**

[www.ultimateplanttrailers.com.au](http://www.ultimateplanttrailers.com.au)   



**At Ultimate Plant Trailers,  
we are dedicated to crafting  
custom trailers that are  
precisely engineered to  
align with the specific  
demands of your business.**

Our trailers are designed to endure and excel under the most challenging conditions. Choosing Ultimate Plant Trailers is an investment in a product that combines striking looks with superior functionality, ultimately enhancing the efficiency of your operations.

Discover the full potential of custom trailers and embark on designing yours today at Ultimate Plant Trailers.

**With over three decades  
of expertise in trailer  
fabrication and an intimate  
understanding of the civil  
construction sector, we set  
the standard for innovation,  
safety, and durability in  
every trailer we produce.**





# THE BUYING & BUILD PROCESS

**1. SCOPE, DESIGN & ATM**

**2. QUOTE & CONFIRMATION**

**3. FABRICATION**

**4. SANDBLASTING & PAINTING**

**5. ASSEMBLY & FIT OUT**

**6. HANDOVER**





# 1. SCOPE, DESIGN & ATM

## Load requirements & Licence classifications

First step is to understand the load requirements and licence classifications.

This is essential to designing a compliant combination, meeting road authority and NHVR legislation. EG: Tare of Load & MR, HR, or HC heavy vehicle licence.

## Your Vehicle information & ATM Requirements

Hitch and trailer designs have restrictions and need to be thought about. What is your Truck's GMV / GCM and current Hitch type. Different Trailer designs have varying carrying allowances. What suits you, Is it achievable?

## Options to support your unique set up

Options to the design can save time, create safer combination's and allow more flexibility to the end user. This can be in the way of container pins, under deck storage, truck to trailer ramps or additional lighting. Time is money, look at what options will save time and have less fatigue on the end user.

	Hitch Down Load	Axle Group	ATM
<b>Single Axle</b>	As current 05/2025 -Subject to change.		
Ringfeeder	2.5	9	11
Bartlett - Pintle Style	5	9	13
Pintle	5	9	13
<b>Tandem Axle</b>			
Ringfeeder	2.5	16.5	19
Bartlett - Pintle Style	5	16.5	21.5
Pintle	9	16.5	25.5
<b>Tri Axle</b>			
Ringfeeder	2.5	21*	23.5
Bartlett - Pintle Style	5	21*	26
Pintle	9	21*	30

\* Total includes the 1 Tonne transferable mass notice for tri axle trailers - NHVR.







## 2. QUOTE & CONFIRMATION

### Detailed Quotation & Proposed Delivery Timeline

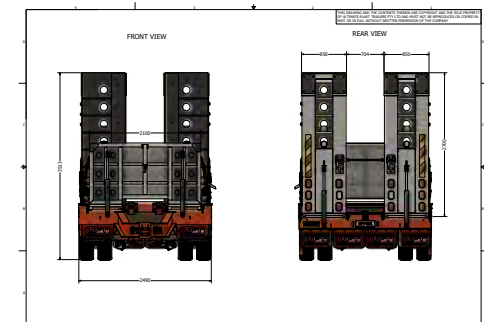
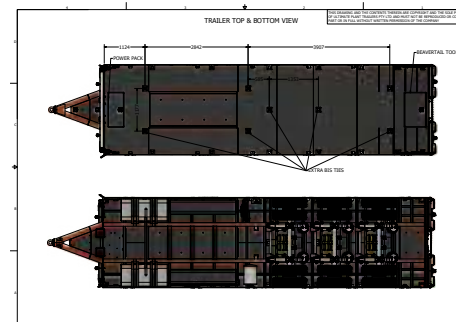
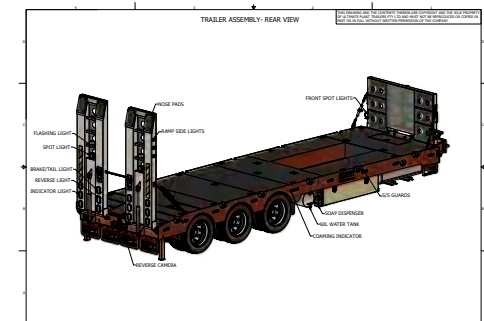
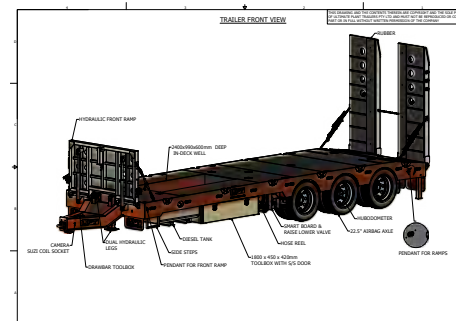
With a clear understanding of your requirements, our team will prepare a tailored and itemised quote for a trailer designed to suit your plant and equipment, enabling you to make informed decisions based on your needs and preferences.

### CAD Drawings with Custom Options

Our in-house engineering team will provide CAD drawings based on your specifications. These drawings provide a clear visual representation of what you can expect. With a range of customisable options, we are happy to supply any additional information you may need—simply let us know.

### Deposit & Design Confirmation

Upon acceptance of the quote, you will receive a build pack. At this stage along with your deposit, we'll gather additional details about your truck—such as hitch height, chain size, lighting system, ABS/EBS preferences, and voltage requirements. With this information, we will finalise the custom trailer design and provide updated drawings for your review. Once confirmed, we proceed to the manufacturing stage.







## 3. FABRICATION

### Profile Steel Sourcing & Laser Cutting

We source high-quality profile steel locally. Long-length steel (up to 12 metres) is sent for precision laser cutting and then transported to our North Geelong manufacturing facility. Additional components are cut and prepared in-house, ensuring seamless integration during assembly.

### Chassis & Ramp Fabrication

The fabrication process typically takes between 5 to 15 business days, depending on the build complexity. We welcome you to visit our facility during this stage to see your trailer in progress or we can provide photos / videos upon request. Every build undergoes strict quality assurance inspections to maintain the high standards and distinctive UPT finish we're known for.

### Accessories: Toolboxes, Legs, Racks & More

All accessories, from toolboxes and cages to ramps, legs and racks, are designed and manufactured in-house at our Geelong facility. This hands-on approach allows us to maintain full control over quality, consistency, and craftsmanship—something we take great pride in.







★★★★★

*UPT build the best trailers in the country! Matt is great to work with. He helped us all the way along. High quality product and awesome customer service. Well done team UPT ! Highly recommended!*

Praneeth Saranga

★★★★★

*I wish I could give Matt and the team at UPT 100/5 stars, you couldn't find a better place to build any trailer you need! Nothing is too much and every little design requirement is taken into consideration and implemented into the trailer. I wish our business needed 10 trailers just so I could design them with Matt. 1000% recommend UPT to anyone who needs a trailer built to suit just about any situation.*

Tyler Carson





## 4. SANDBLASTING & PAINTING

### On-Site Class 2 Sandblasting – Full Trailer Coverage

To ensure comprehensive surface preparation, we do not fit ramps, axles, or fixtures to the trailer prior to blasting and painting. Each trailer is lifted and blasted underneath the deck—areas you typically can't see—giving you peace of mind that the entire structure is protected, not just the visible surfaces.

### Pre-Paint Inspection & Preparation

Following sandblasting, each trailer is thoroughly cleaned—blown down, vacuumed, and moved into our spray booth. All panel joints are sealed with Sika Flex, and the trailer undergoes a pre-paint quality assurance check to ensure it is ready for coating.

### Paint Application

We use the PPG 2-Pack paint system, beginning with Barrier EX-408 Zinc Phosphate Primer, followed by Barrier Protec 625 Acrylic Polyurethane Enamel. This premium system delivers the high-quality, durable UPT paint finish our clients rely on. Thanks to the capabilities of our skilled team, we can also offer multi-colour and metallic finishes upon request.











## 5. ASSEMBLY & FIT OUT

### Electrical & Hydraulic Systems

At this stage, we install all electrical and hydraulic components with your trailer securely positioned on our hoist. This includes fitting Wabco EBS/ABS control units, wiring, lighting systems, and camera cabling, ensuring reliable functionality and performance.

### Axle Installation & Wheel Alignment

Axles are fitted according to your selected suspension type—either airbag or spring. Once the trailer is back on the ground, we perform a precise in-house laser alignment using advanced Josam alignment equipment to ensure optimal tracking and tyre wear.

### Final Fit-Out & Finishing Touches

Components such as ramps, toolboxes, cages, and leg supports are installed during the final assembly. The trailer is then completed with reflectors, decals, and custom stickers. A thorough final quality assurance inspection is carried out to ensure everything meets UPT standards before handover.







## 6. HANDOVER

### Road Testing, Weighing & Final Photography

Every trailer undergoes a comprehensive road tested to ensure smooth operation and functionality—from braking systems to lighting. This also enables us to weigh the trailer, confirming compliance and accuracy before delivery.

### EBS Programming & Commissioning

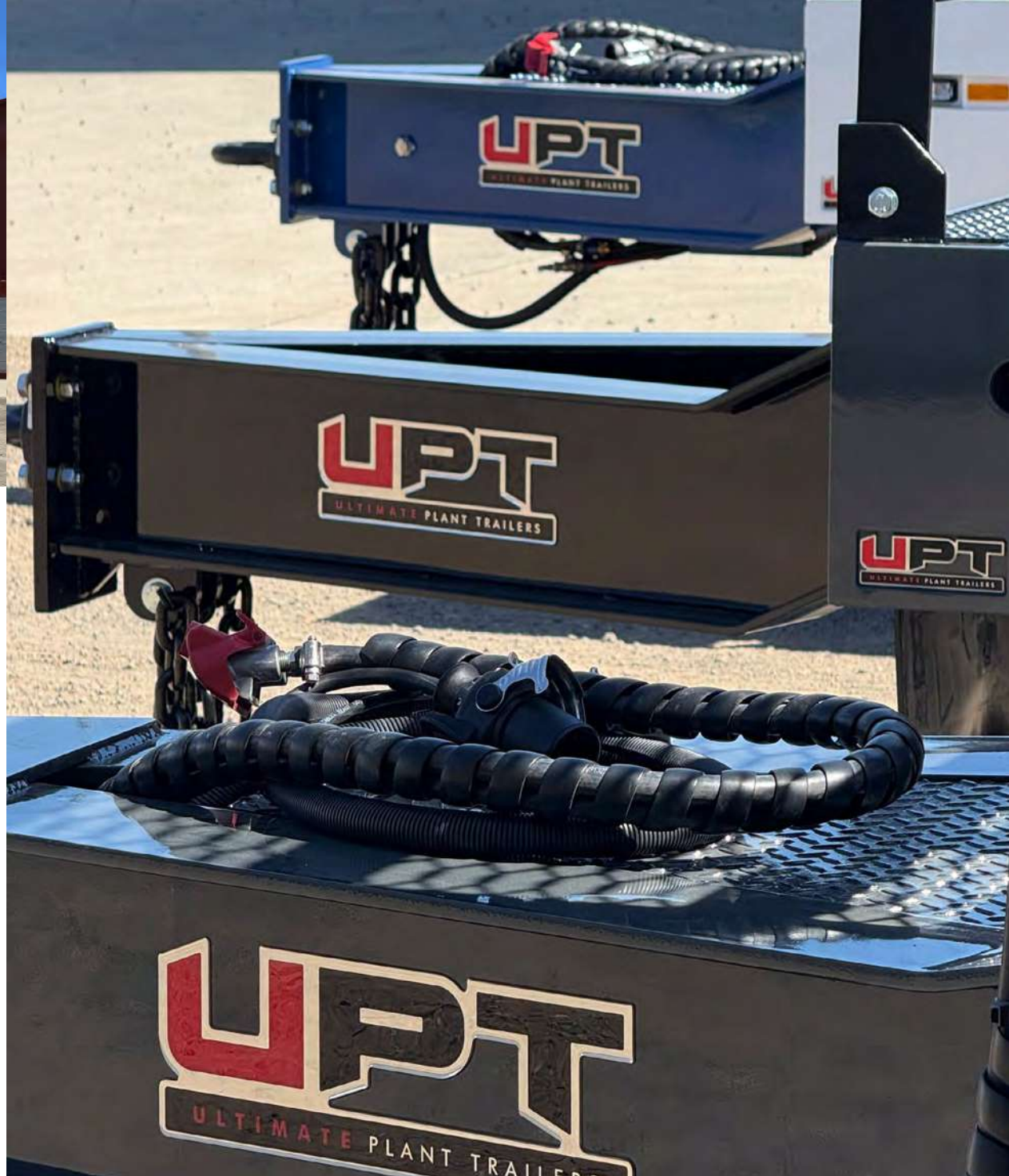
Following the weigh-in, we program the EBS computer and register your trailer details with the RAV (Register of Approved Vehicles), ensuring national compliance across Australia. At this point, your trailer is fully commissioned and ready to depart our facility.

### Final Handover & Walkthrough

For ex-factory collection, we conduct a handover with you onsite. We'll walk you through the features, functions, and maintenance essentials to ensure you're completely satisfied with your new trailer. Before you leave, we take a few final photos of your combination—ready for you to get straight to work with your Ultimate Plant Trailer.







# Congratulations

You are now the proud owner of your own UPT Trailer and a life-time member of the UPT family.

If you have any questions we are only a phone call away. We will always do our best when it comes to after-sales service and keeping you up to date with changing legislation and requirement through our plant trailer builders' blog and social media.

## Ultimate Plant Trailers

11 Saunders St, North Geelong VIC 3215

Ph 03 5272 2827

Mb 0408 961 489

Em [matt@uptgroup.com.au](mailto:matt@uptgroup.com.au)



[www.ultimateplanttrailers.com.au](http://www.ultimateplanttrailers.com.au)

